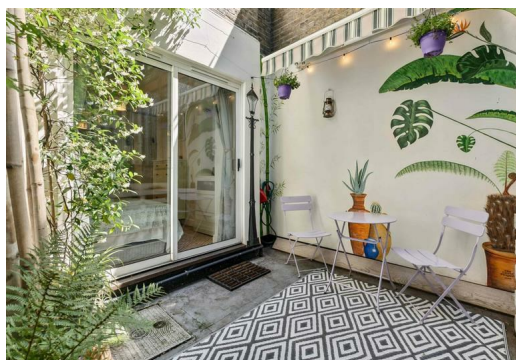


TATES

020 7602 6020



Avonmore Road, London W14 8RT

£599,000

A charming two-bedroom garden flat located on the sought-after Avonmore Road in West Kensington. This beautifully presented home offers a spacious open-plan living area, two double bedrooms, and a private patio garden perfect for outdoor entertaining.

Ideally situated close to Kensington High Street, Barons Court, and West Kensington stations, the property combines peaceful residential living with excellent transport links and local amenities.

A short walk from Kensington Olympia benefitting from all that the new Olympia development has to offer.

AVONMORE ROAD, W14

Approximate gross internal area
581 sq ft / 54.00 sq m

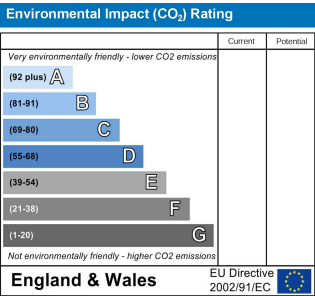
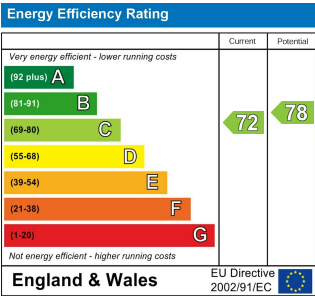
Key :
CH - Ceiling Height



LOWER GROUND FLOOR

Not to scale, for guidance only and must not be relied upon as a statement of fact.
All measurements and areas are approximate only

Whilst these particulars are produced in good faith and are believed to be correct, no guarantee is given, nor any responsibility accepted, by Tates nor by any of its representatives, for their accuracy. The particulars do not constitute part of any offer or contract, and it is recommended that such things as measurements, condition, structure, services, appliances, fixtures and fittings and facilities are all independently assessed by the prospective purchaser or renter of the subject property prior to committing to any contract.



135 Hammersmith Road, West Kensington, London W14 0QL mail@tatesestates.co.uk

tatesestates.co.uk

Tates (Agents) Ltd. Registered in England and Wales No. 02356337
Registered Office: Imperial House, 8 Keane Street, London WC2B 4AS

